



TNKID









ACABADOS DE ESTRUCTURA • STRUCTURE FINISHES • FINITIONS DE STRUCTURE

Chasis realizado con tubo de acero de 25 mm de diámetro x 2 mm de espesor. El respaldo está fabricado en polipropileno y en un 30% de fibra de vidrio. Las conteras y brazos también son de polipropileno. El asiento es de espuma inyectada tapizada en diversos acabados. Los brazos y la carcasa del asiento serán en acabado negro o marengo. Frame manufactured in 25mm diameter steel tube, 2mm thick. Back made of polypropylene and 30% glass fiber. Polypropylene arms and caps. Moulded foam seat, upholstered in several finishes. Black or dark grey finish in arms and seat shell. Le châssis réalisé avec des tubes en acier de 25 mm de diamètre x 2 mm d'épaisseur. Le dossier est fabriqué en polypropylène et avec un 30% en fibre de verre. Les bouts sont aussi en polypropylène. L'assise est en mousse injectée et en tissu avec plusieurs finitions. Les accoudoirs et la coque de l'assise seront en finition noir ou marengo.



Aluminizada.
Silver.
Aluminium.



Cromada.
Chromed.
Chromé.



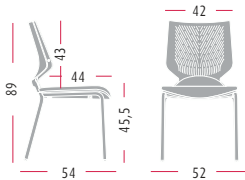
Brazos y carcasa en negro.
Black arms and seat shell.
Accoudoirs et la coque de l'assise en finition noir.



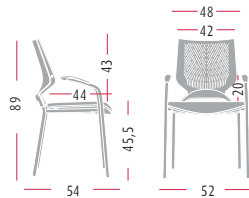
Brazos y carcasa en marengo.
Dark grey arms and seat shell.
Accoudoirs et la coque de l'assise en finition marengo.

MEDIDAS • SIZES • DIMENSIONS

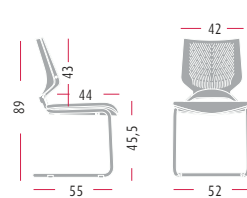
Sin brazos.
Without arms.
Sans accoudoirs.



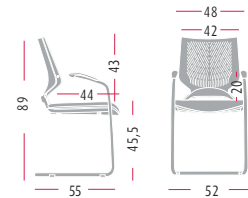
Sin brazos.
Without arms.
Sans accoudoirs.



Sin brazos.
Without arms.
Sans accoudoirs.



Sin brazos.
Without arms.
Sans accoudoirs.



4 Patas • 4 legs • 4 Pieds

Patín • Cantilever • Luge

RESPALDO • BACKREST • DOSSIER

Rejilla de polipropileno inyectado, diseñado para distribuir de forma homogénea el peso del usuario y su estética reticular favorece la transpiración de la espalda. FBackrest manufactured with Polypropylene (PP), has been designed to distribute in a uniform way the user weight and its cell design improves the back perspiration. Dossier en polypropylène. Le dossier a été conçu à cause de la distribution homogène des poids de chaque utilisateur, son esthétique réticulaire facilite la transpiration du dos.



Negro • Black • Noir



Gris • Grey • Gris



Azul Oscuro • Dark Blue • Bleu



Naranja • Orange • Orange



Pistacho • Pistachio • Pistache



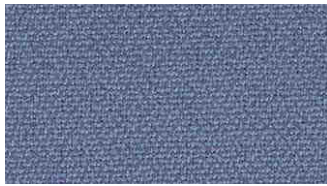
Rojo • Red • Rouge



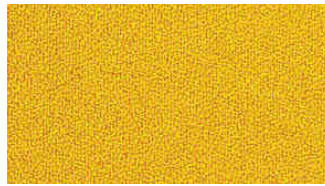
Beige • Beige • Beige

ACABADOS DE TAPIZADO FABRIC FINISHES • FINITIONS DE TISSU

Grupo "T - C"
Fabric "T - C"
Tissu "T - C"



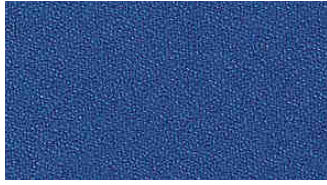
C88 T88



T91



C80 T80



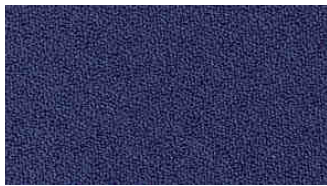
C89 T89



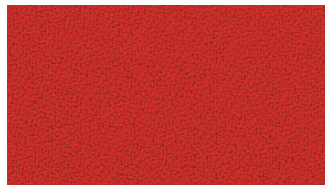
C81 T81



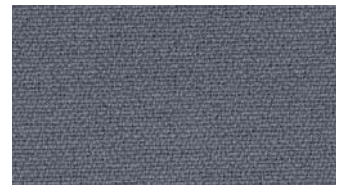
T90



C87 T87



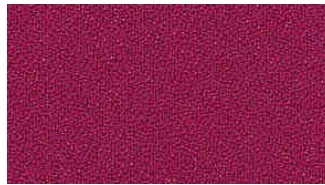
T85



C84 T84



C86 T86



C83 T83



C82 T82

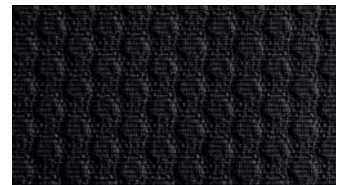
Grupo "K"
Fabric "K"
Tissu "K"



K50



K51



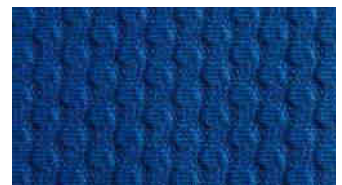
K52



K54



K55



K59

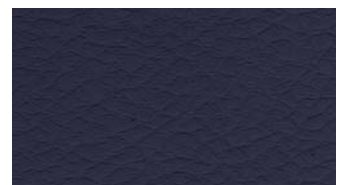
Grupo "N"
Fabric "N"
Tissu "N"



N30



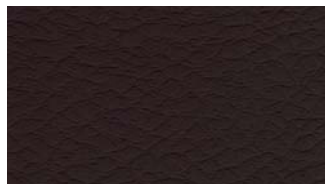
N33



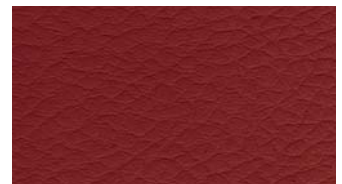
N32



N34



N31



N35