

WINNER

Patented model



commercialimages
evolve your working environment



■ Code: FTS 1007 023

■ Description: Operative chair, general use

WINNER 40

Patented model

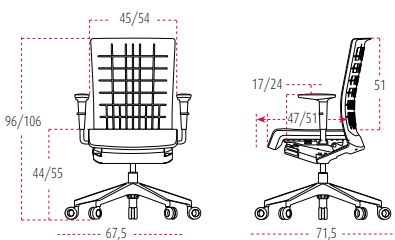
Technical Profile



DESCRIPTION

Operative office chair, 5 star base with castors. **Base** manufactured by aluminium injected or plastic polyamid with glass fiber (FV). Anti-skid castors standard use or weight control use. **Backrest** manufactured by Polypropylene (P.P.+30% FV) flexible with 30% glass fiber and other components such as antistatics, antioxidants, UV stabilizers. glass fiber manufactured and other components such as antistatics, antioxidants, UV stabilizers. This material support stronger impacts than PP. Perspirable and ergonomics design. Moulded polypropylene **Seat Shell** covered by moulded foam **PU flexible de 40kg/m³** density, upholstered with fabric easy to clean. Height adjustable system by gas lift. Depth seat adjustment (60 mm). Return spring system.

SIZES



SIZES

Total height: from 960 mm to 1.060 mm
 Total width: from 675 mm to 715 mm
 Total depth: from 675 mm to 715 mm
 Seat height: from 440 mm to 550 mm
 Seat width: from 450 mm to 540 mm
 Seat depth: from 470 mm to 590 mm

BACK



SEAT

Fabric: T, C, K D and N
 (see finishes and fabric card)

BASES AND CASTORS



Polished aluminium - Ø 67,5 cm
 Soft hole weight control castor Ø 65 mm (possible to release the weight control)



Silver aluminium - Ø 67,5 cm
 Soft hole weight control castor Ø 65 mm (possible to release the weight control)



Silver aluminium - Ø 67,5 cm
 Dark grey anti-skid castor, Ø 60 mm black soft band



Black Polyamide - Ø 67,5 cm
 Black anti-skid castor, Ø 60 mm soft band



Dark grey polyamide - Ø 67,5 cm
 Dark grey anti-skid castor, Ø 60 mm black soft band

WINNER 30

Patented model

Technical Profile



Polyamide frame manufactured with glass fiber

Back rest, technical and ergonomic fabric

OPTIONAL. Adjustable lumbar support

Pivoting arm 180°

1. SEBS of 3 mm

2. (P.P) of 3 mm

3. Height adjustment

4. Component by solid aluminium 20x30 mm thickness

Patented synchro-evolutive knee-tilt mechanism

Gas lift

5 star base. Moulded aluminium or polyamide base with glass fiber

Anti-skid castors, hole weight control castor or standard castors

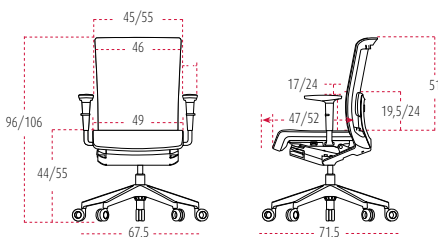
DESCRIPTION

Operative office chair, 5 Star base; aluminium base and polyamide with glass fiber (FV). Anti-skid castors standard use or weight control use.

Back rest, polyamide(glass fibre) frame , elastic technical mesh composed by 64% polyester and 36% polyamide. Breathable. Moulded polypropylene.

Seat Shell covered by moulded foam **PU flexible de 40kg/m³**, upholstered with fabric easy to clean. Height adjustable system by gas lift. Depth seat adjustment (60 mm). Return spring system.

SIZES



SIZES

Total height: from 960 mm to 1.060 mm

Total width: from 675 mm to 715 mm

Total depth: from 675 mm to 715 mm

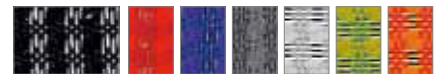
Seat height: from 440 mm to 550 mm

Seat width: from 450 mm to 540 mm

Seat depth: from 470 mm to 590 mm

BACK

NET



PLUS



SEAT

Fabric: T, C, K D and N
(see finishes and fabric card)

BASES AND CASTORS



Polished aluminium - Ø 67,5 cm
Soft hole weight control castor Ø 65 mm (possible to release the weight control)



Silver aluminium - Ø 67,5 cm
Soft hole weight control castor Ø 65 mm (possible to release the weight control)



Silver aluminium - Ø 67,5 cm
Dark grey anti-skid castor, Ø 60 mm
black soft band



Black Polyamide - Ø 67,5 cm
Black anti-skid castor, Ø 60 mm
soft band



Dark grey polyamide - Ø 67,5 cm
Dark grey anti-skid castor, Ø 60 mm
black soft band



DESCRIPTION

Operative office chair, 5 Star base; aluminium base and polyamide with glass fiber (FV). Anti-skid castors standard use or weight control use. Moulded foam PU flexible de 40kg/m³, density back with inner metal frame tube Ø 16x1,5mm, upholstered in different fabrics. Two different models, headrest or without headrest. Moulded polypropylene seat Shell covered by moulded foam PU flexible de 40kg/m³, density, upholstered with fabric easy to clean. Height adjustable system by gas lift. Depth seat adjustment (60 mm). Return spring system.

BACK REST AND SEAT

Fabric K



Fabric C / Fabric T



Fabric N



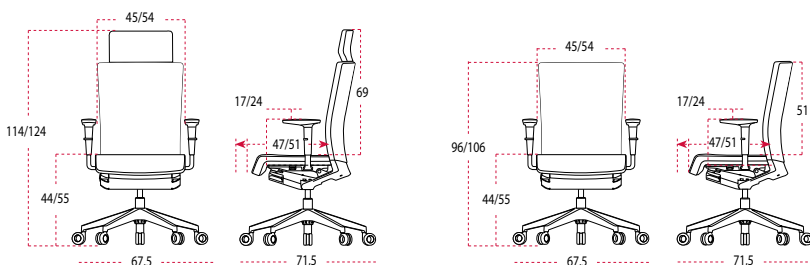
Fabric D



Fabric P

(see finishes and fabric card)

SIZES



SIZES

Total height: from 960 mm to 1.060 mm
Total width: from 675 mm to 715 mm
Total depth: from 675 mm to 715 mm (headrest)

Seat height: from 440 mm to 550 mm
Seat width: from 450 mm to 540 mm
Seat depth: from 470 mm to 590 mm

BASES AND CASTORS



Polished aluminium - Ø 67,5 cm
Soft hole weight control
castor
Ø 65 mm (possible to release the
weight control)



Silver aluminium - Ø 67,5 cm
Soft hole weight control
castor
Ø 65 mm (possible to release the
weight control)



Silver aluminium - Ø 67,5 cm
Dark grey anti-skid castor, Ø 60 mm
black soft band



Black Polyamide - Ø 67,5 cm
Black anti-skid castor, Ø 60 mm
soft band